



COASTLINE Chiropractic CENTRE

19 Ocean Drive, Port Macquarie
Shop 2, 42 Cameron St, Wauchope

P: 02 6583 9393
F: 02 6583 9389

E: info@coastlinechiropractic.com.au
W: www.coastlinechiropractic.com.au

OUR CHIROPRACTORS

Dr Darren J Gray

Chiropractor, Certified Rehab Therapist
BSc, MChiro, MClinRehabNeuro (MCAA,
ClinFellAAFN)

Darren's special interests include
neurology, rehabilitation health, family
chiropractic and sports medicine.

Available Monday–Thursday & Saturday
Wauchope and Port Macquarie Centres

Dr Bill Leung

Chiropractor
BChiroSc (Mac), MChiro (Mac)

Bill has a competitive martial arts
background and is looking forward to the Mid
North Coast sea-change from Sydney.

Available Tuesday–Saturday
Wauchope and Port Macquarie Centres

CLINIC HOURS AND SERVICES

Consultations are by appointment.

Chiropractic and Neurological Rehabilitation

Dr Darren Monday to Thursday
 Saturday

Chiropractic

Dr Bill Tuesday to Saturday

*We attempt to cater for same day
appointments, however forward booking
your appointments is always recommended
to avoid disappointment.*

BRAINSTORM REHABILITATION

Brainstorm can assist balance disorders
in patients who may be suffering regular
falls or dizziness caused by neurological
issues, Children with learning difficulties,
brain injury patients and those undergoing
stroke recovery. The practitioner at
Brainstorm has attained extensive
postgraduate training in the field of clinical
neuroscience so you can be confident you
are in good hands.

w: www.brainstormrehab.com.au

p: 1300 667 443

Appointments are limited.



YOUR CHIROPRACTOR
SEPTEMBER/OCTOBER 2020



Your body's balancing act

*Have you given much thought to your
balance? Or do you, like many others,
take this ability for granted?*

That's understandable – it's often only when
we experience a problem that we give it
more thought. Yet, balance is more than
simply remaining upright. There are complex
processes that allow us to move, turn our
heads without our vision blurring, quickly
readjust our muscles to support stability and
stay vertical.

We all stumble or experience clumsiness on
occasion. We may bump into the doorframe
or sway when we get up too quickly. But
when balance issues become chronic,
the symptoms are usually caused by an
underlying problem and can be troublesome,
incapacitating, and dangerous. Symptoms
may include a sensation of spinning or
lightheadedness, blurred vision, hearing
changes, stumbling, falls, decreased spatial
awareness, poor depth perception, and
nausea. It may also contribute to fatigue,
anxiousness, and confusion.

How do we balance? It's an important
question. Just as a car has many components
that allow it to safely take a corner at speed,
we have many interworking parts that allow
us to remain stable. We must sense where
we are in space, make constant small
adjustments that bring us back to centre,
and integrate these functions seamlessly.

This begins within the ears. The inner ear
has small organs that contain fluid and hair.
As you move your head, the fluid shifts, the
hair bends, and this information is sent, via
nerves, to the brain. Each organ provides
feedback on movement in a certain direction:
tilting upward or downward, leaning to the left

or right, turning sideways, and accelerating.
Inner ear infections or ear crystals upset this
ability, which is why they can cause dizziness
and imbalance.

The eyes provide visual input – they send
impulses to the brain that provide visual
cues identifying your position relative to other
objects. To understand this, stand on one leg
and bend your other knee. How balanced do
you feel? Now, try it with your eyes closed.
The difference is marked.

The skin, muscles and joints, particularly of
the spine, are also involved. As they move,
they continuously transmit what is called
proprioceptive information regarding their
position, relevant to the body parts they
connect to. For example, increased pressure
is felt in our heels when we lean back. These
cues help our brain determine where our
body is in space.

The remarkable combination of input
enables us to sense when we are moving,
in which direction, and at what speed. We
then respond to that information, often
subconsciously. Nerves fire, muscles
move us in appropriate ways, and we
are, usually, able to right ourselves. The
balance system also provides feedback on
the success of these manoeuvres, allowing
further adjustment.

Maintaining optimal balance is important –
these activities may help.

- Practice on a wobble board. These small platforms have a semi-circular underside so you can balance on the flat side.
- Walk heel-to-toe, forwards and reverse.
- Start Tai Chi, dance or yoga classes.

If you are experiencing balance problems,
ask your chiropractor for advice.

WHAT'S INSIDE



**SAY GOODBYE TO
GARDENING PAIN**



**NUT
MILKS**



**IS A BIG BELLY
HURTING YOUR
BACK?**



**COULD YOU HAVE
CARPAL TUNNEL
SYNDROME?**

Is a big belly hurting your back?

As waist circumference creeps up, our health can suffer.

The risk of issues such as type 2 diabetes, high cholesterol, elevated blood pressure and cardiovascular disease are increased. But have you ever wondered if your paunch might also be hurting your back?

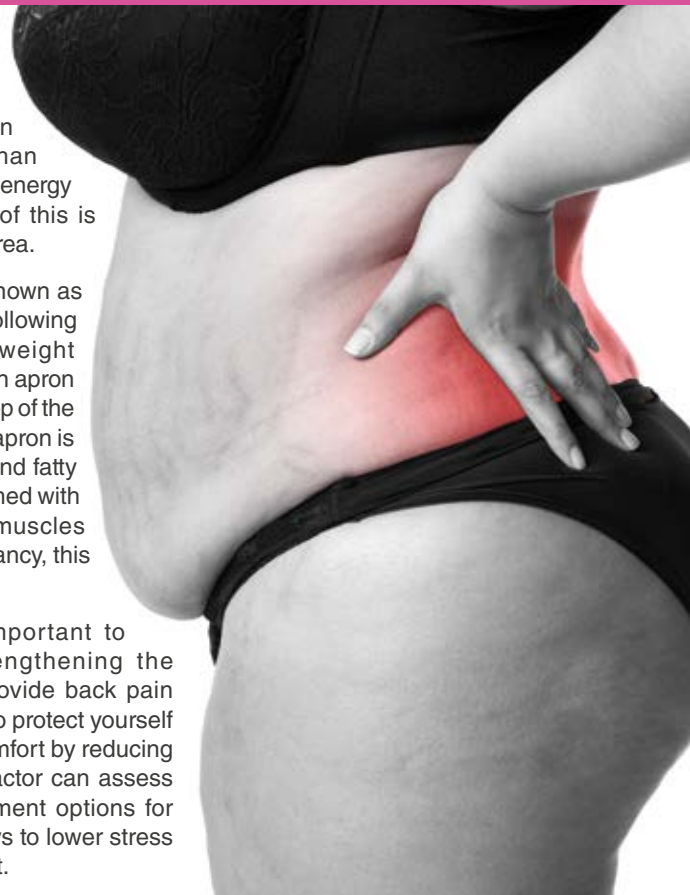
The spine is made from many vertebrae that sit one on top of another, joined at the back by facet joints. These joints are a little like snap-together modular flooring. Each one fits together beautifully, and is aligned in a way to support your spine and allow healthy movement. They, in essence, provide strength and structure while preventing your head or torso from spinning all the way around! Because of their design, we can walk upright, bend, twist and move safely.

However, a large waist girth alters the physics. It's like carrying a heavy sack of potatoes on your front. The additional continuous pressure tips the pelvis forward and drags the attached vertebra with it. It increases the forward curve in the lower back, and one vertebra then pulls on the next. The postural distortions can often be seen by the eye. These changes alter the pressure applied through the facet joints, and can trigger muscle tension – increasing the risk of pain, injury and degeneration.

People usually gain weight from a poor diet, lack of exercise, poor sleep and stress. When a person consumes more calories than their body burns, the excess energy is stored as fat, and some of this is deposited in the abdominal area.

A large hanging belly, also known as the panniculus, can occur following pregnancy or significant weight fluctuations. It's often called an apron belly, and can hang from the top of the pubic area to the knees. The apron is made solely of excess skin and fatty tissue deposits. When combined with the weakened abdominal muscles that are common post-pregnancy, this apron can be pronounced.

For many reasons, it's important to address a big belly. Strengthening the abdominal muscles may provide back pain relief, but it's also important to protect yourself from future illness and discomfort by reducing your belly size. Your chiropractor can assess your posture, discuss treatment options for back pain and advise on ways to lower stress and achieve a healthy weight.



WORD SEARCH

- ALMONDS
- ARTHRITIS
- BALANCE
- BLURRED
- BODY
- CARPAL
- CHIROPRACTOR
- CHRONIC
- DANGEROUS
- DIABETES
- DISEASE
- EARS
- ERGONOMIC
- FAT
- FIBROUS
- FRACTURE
- INFECTION
- MUSCULAR
- NAUSEA
- NERVES
- PAIN
- PELVIS
- POSTURE
- PROPRIOCEPTIVE
- SPINE
- TUMOUR
- VESTIBULAR
- VISUAL
- WRIST
- YOGA

X L F E F M W I J A R G V R M O X M L U U D W K
C F T C P R B H D A Z E E B O W G T X N D T G O
I N A U S E A I Y L C I S I R T S I R W C U S J
N A H Y P T S C D I J E T T U Q H I H H D T I M
O B R C S E E C T S A K I B O D F Q I M S D T B
R U U O A I J I L U V K B K M C I R W U P P I J
H I T S N L L M N H R P U P U L O S S S O O R I
C Z E D Q A E O W D C E L F T P E X S C S G H X
K I A K S P G N R O V A A T R V F A S U T S T G
M E R D R R S O I T E I R A R W N G T L U C R C
E R S E R A Z G N N P C C E O I O B Z A R J A Y
Q S M E L C C R F Z P T N G X G M Z K R E I K J
A F P Q D S Q E E L O D A N G E R O U S N R S A
L R E P S U Y K C R I A L Q H S E T E B A I D G
M Y W C K O M Y T F Y D T O Z V O J R B U E P F
O F V J M R D W I G V E E A J V W M K X Z C H F
N P E S L B V Z O F L I N R Z S Y P U J S N F A
D A D T T I K S N H W N S Z R O X S G V X A V T
S I I G N F M C R B B G M U G U V U P F T L Y P
X N P G J O Y C O M R O U A A Q L F K I V A A E
G M W S K S Q S J T Z U D R L L P B Y E N B W L
B B K A W V L S H C T O M Y S F R M R J A E V V
P R O P R I O C E P T I V E X Z Q R F L F B U I
Z U Y S G K F Y R Y R D E I Q N J E G Y Y E V S

Nut milks

More and more people are choosing plant-based alternatives to traditional meat and dairy products. Whether you're considering switching from dairy for animal rights, health, environmental reasons, or if you just prefer the taste, the options are increasing all the time.

Plant milks have been made and used for hundreds of years, but until recently, the only common dairy alternative available was soymilk – although a good option it's not to everyone's taste. Choices now include rice, oat, hemp, or coconut milk, as well as a variety of nut milks. Nut milks are naturally gluten, lactose, and soy-free.

If you are looking for environmentally-friendly alternatives, almond milk comes under criticism for consuming a large amount of water during farming and production. It's still less than dairy milk, but certainly not ideal. Greenhouse gas emissions and land use for the production of plant-based milks are lower than for dairy milk.

The nutrition content depends upon the plant source and the processing. Typically, nut based milks are highly diluted; therefore don't contain high quantities of nutrients. For this reason, many are fortified with vitamins and minerals. They can also have sugar and other additives, so it's worth checking the packaging for a full run-down of the ingredients.

Nut milks have less protein and calcium than cows' milk and therefore they are not recommended as a complete milk replacement for children, teens or pregnant women. On the other hand, people who need to limit their calories or saturated fat intake may benefit from some plant-based milks.

COMMON NUT MILKS

- Almond milk is a popular choice as it's widely available, and its neutral flavour makes it versatile.
- Hazelnut milk has a creamier colour and a stronger nutty flavour, making for a 'love or hate' relationship.
- Cashew milk has a mild flavour and creamy feel, and is becoming more widely available.
- Coconut milk is not from a true nut, but is a good alternative for those with nut allergies. Lovers of the taste will find it makes a delicious hot chocolate, but it has the highest fat content of the non-dairy milks.

With a huge range of nut milks and other dairy alternatives, have fun finding your personal favourite or making your own!



Say goodbye to gardening pains

Whether you are a weekend warrior or a dedicated horticulturist, gardening is a hobby worth more than its weight in tomatoes.

Spending time with your hands in the dirt can boost your quality of life. Pottering amongst your plants can calm stress, encourage a positive mood, reduce the symptoms of anxiety and depression, and enhance brain function.

But, as with many activities, poor posture and repetitive physical strain can trigger discomfort. In the veggie plot, this is nicknamed gardening pains. By understanding how you can hurt your back, you can implement steps to ease pain, and help yourself and your garden to thrive.

When we overstretch or bend incorrectly, like a twig with too much pressure, we can break. Hours spent bent over, lifting pots and plants with poor technique, and reaching to the rear of plant beds stresses the spinal joints and back muscles. This can lead to fatigue, injury and pain. Correct lifting methods, ergonomic tools and regular rest breaks can prevent harm.

When you lift, bring your feet close to the item and keep them hip width apart with one foot slightly in front of the other. Squat, maintain an upright spine and look straight ahead. Hold the load near your body. Lift by slowly pushing up with your legs; don't use your back. Slowly change direction using small steps. Reverse the lifting process to put the load down. Above all – make sure the load is not too heavy or bulky.

Invest in quality ergonomic tools. Did you know there are long handled weed removers, ergonomic light-weight spades, padded kneeling seats, and deluxe gardening scooters? Use them. A trolley will assist in the easy movement of materials, plants and tools. A raised no-till garden will lower effort and the need to bend.

Remember to schedule rest and recovery. Garden for a set period of time and then gently walk and stretch.

Gardening is a hobby well worth pursuing, with physical, psychological and potentially nutritional benefits. If back pain does strike, your chiropractor can provide advice and appropriate care.

MAKE YOUR OWN ALMOND MILK

Making your own almond milk is easy and tastes better than store bought.

This recipe makes one litre – add less water if you would like it to be creamier.

- 1 cup raw almonds, soaked
- 2 dates (pitted)
- 1 tsp vanilla essence
- 4 cups of filtered water

Cover the almonds with water and soak for 12 hours. Drain and discard the water.

Place the almonds, dates, essence and filtered water in your blender or food processor and blend until the almonds are finely ground.

Place a fine cotton cloth over a bowl. To strain, pour the almond mixture into the cloth. Squeeze to extract all the almond milk.

Store in a glass jar in the fridge for up to three days.

Tip: Once you have strained the milk from the mixture you are left with almond pulp – this can be put in porridge, smoothies, or baking for added protein and fibre.



Tingly, painful hand?

You could have **carpal tunnel syndrome**

Do you experience numbness or tingling in your hand, particularly of the thumb, index and middle fingers?

Do you drop items, especially when you try to pinch? Does your palm hurt to touch? Do you find yourself shaking your hand to gain relief from these symptoms, most notably during the night? You might have carpal tunnel syndrome (CTS).

The carpal tunnel is a narrow passage formed by your carpal, or wrist bones. These bones form the floor of the tunnel while a thick fibrous tissue band creates the roof. The median nerve and muscle tendons that help flex your fingers pass through this tunnel, where they are protected. However, because this space is small, if the tendons become swollen or thickened, the nerve can become compressed and cause CTS.

CTS usually develops slowly and remains persistent. When the tendons thicken from overuse they require additional space, leaving less room for the nerve. Swelling has the same effect. Less commonly, a local fracture or infection, a tumour, or an underlying disease like arthritis or diabetes, can also reduce space and cause this condition.

Symptoms

The symptoms are due to reduced median nerve function. This nerve provides feeling, and enables muscles to contract. So, when compromised, these functions are affected.

The median nerve supplies sensation to more than half of the palm, the thumb, index and middle fingers; so you may

experience tingling, numbness and pain in these areas. Sometimes it can be a sensation like a mild electric shock. The pain can extend up the forearm.

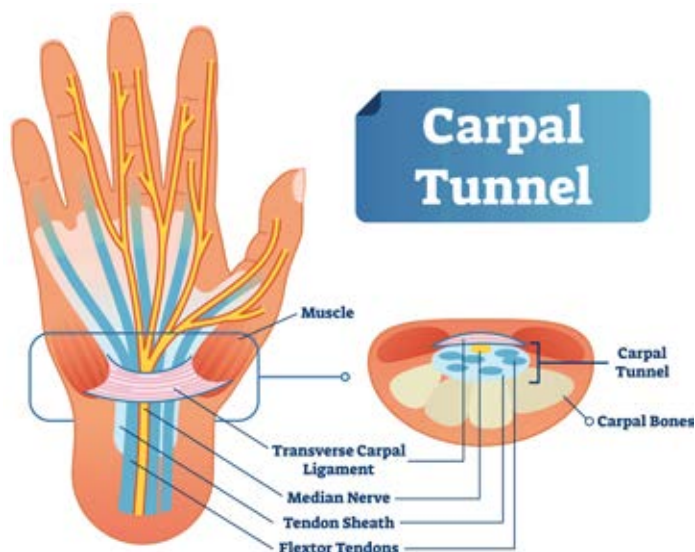
The motor part of the median nerve is responsible for movement of the thumb so, when harmed, weakness can occur. This can contribute to poor pincer grip strength – potentially making it difficult to hold a cup, twist jar lids, write, even do up buttons and put in earrings. When severe, the muscular mound at the base of the thumb can waste away.

How does CTS happen ?

While there are biological factors that increase risk, like being female and pregnancy, there are other factors that can be addressed. Occupational stressors play a role. Repetitive bending of the wrist and exposure to hand-transmitted vibration elevates risk, making assembly line workers, cashiers, drillers, meat packers, computer workers, and sewers more vulnerable. So a safe, ergonomic work space and reduced awkward wrist and hand postures are helpful.

If CTS does occur, treatment options are available. The use of a splint to maintain a neutral wrist position may help. An exercise program that targets arm and shoulder circulation, flexibility, and power can restore reduced grip strength.

Carpal tunnel syndrome can be disabling, so prevention is key. If you think you may be at risk of developing carpal tunnel syndrome, speak to your chiropractor about the best preventative measures for you.



Disclaimer: The information provided in this newsletter is for educational purposes only, and is not intended as a substitute for sound health care advice. We are not liable for any adverse effects or consequences resulting from the use of any information, suggestions, or procedures presented. Always consult a qualified health care professional in all matters pertaining to your physical, emotional and mental health.



PRACTICE UPDATE

ON ARRIVAL AT THE PRACTICE

Please see the receptionist upon arrival. This eliminates the possibility of you being overlooked and enables us to have your information ready.

APPOINTMENTS

Your appointment schedule is designed specifically to obtain the best possible results. Should you wish to change an appointment, we would appreciate as much notice as possible so that other patients can be offered your time.

ONLINE BOOKINGS

We have online booking available. Make your appointment with your favourite chiropractor by booking through coastlinechiropractic.com.au

WAITING TIMES

Nobody likes waiting. We are well aware of this and try very hard to adhere to our appointment schedules. However due to the unpredictable nature of some emergencies we may run behind time. We sincerely regret any inconvenience caused to our patients when we are running behind with our appointments. We make every effort to see patients at their appointed time. You can assist by telling reception staff if you have several problems or a complex issue.

PAYMENT FOR SERVICES

Prompt payment of your account will help us keep the fees down. However if you are experiencing difficulties with payment at any time please arrange a confidential meeting with our accounts person.

OUR COMMITMENT

This practice is committed to providing the best possible care to all patients. Our staff regularly attend short continuing professional education courses to update their knowledge and techniques.